

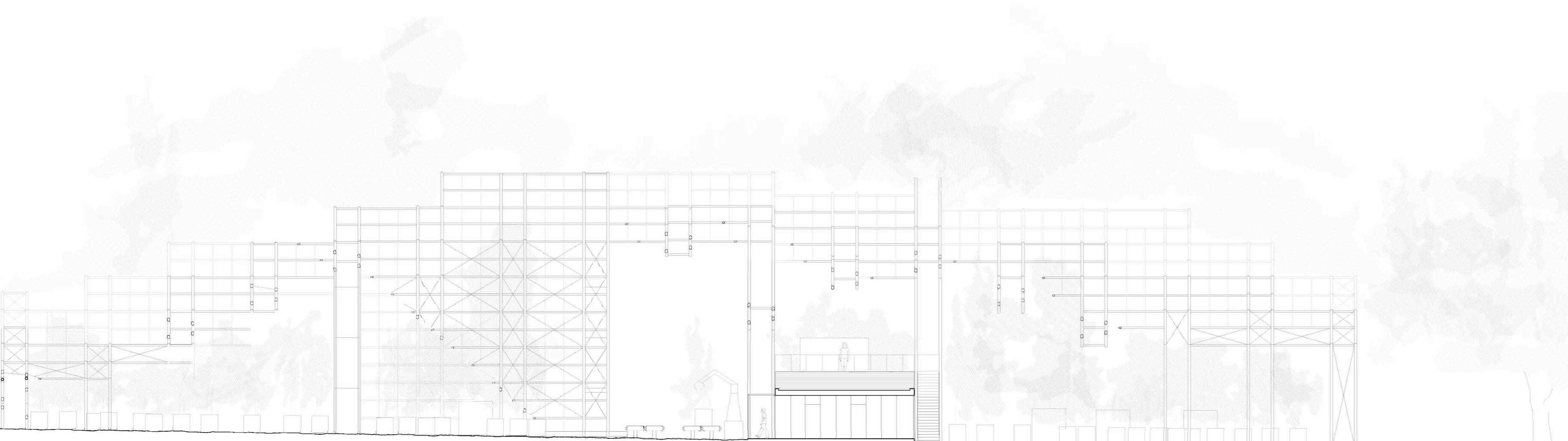
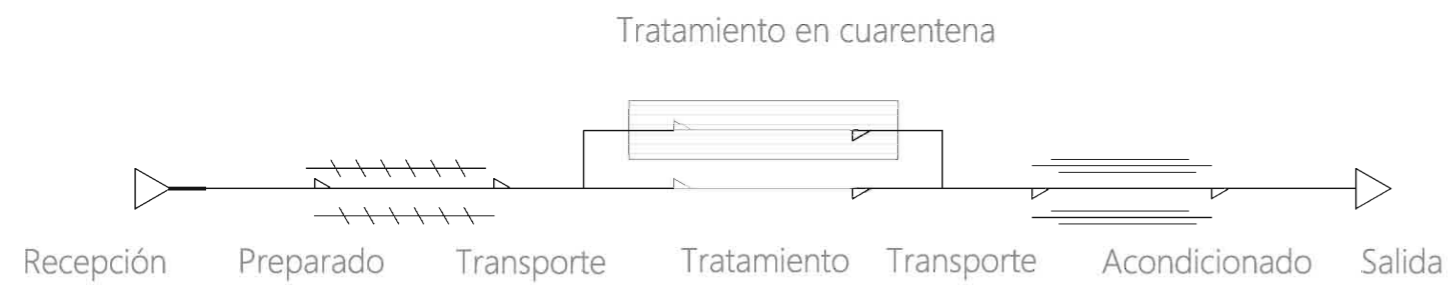
Accesos y entorno

E: 1/2 000



Funcionamiento

E: 1/500



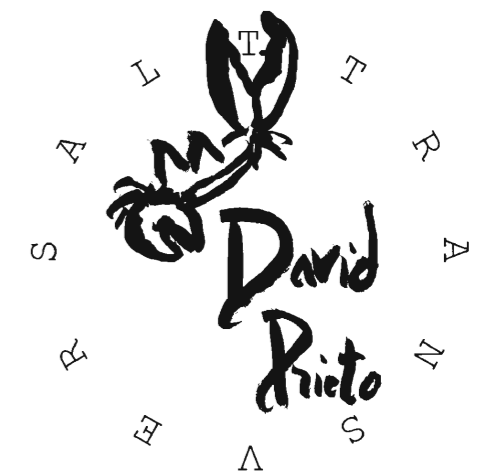
E: 1/200

HOSPITAL PARA PLANTAS

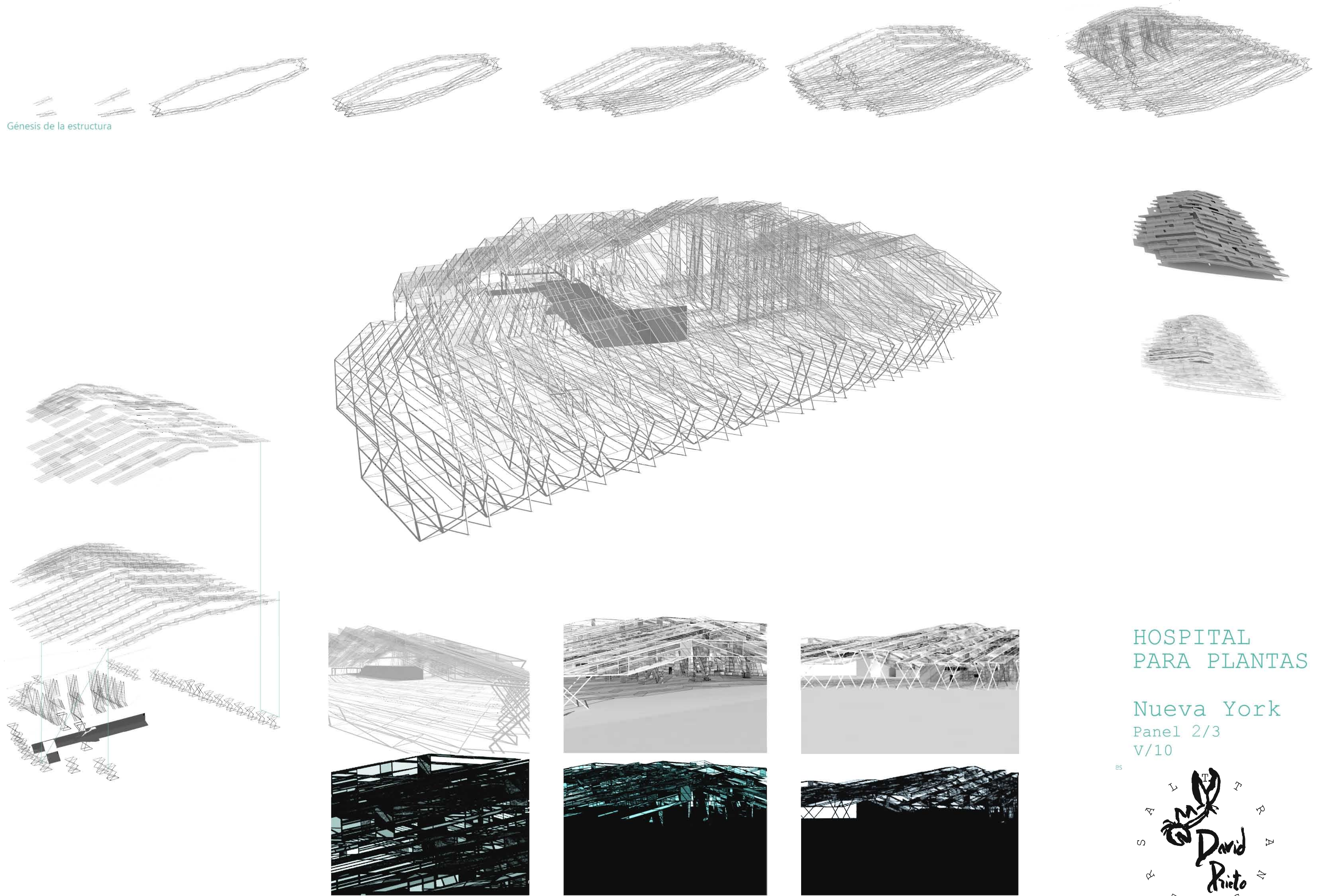
Nueva York

Panel 1/3

V/10



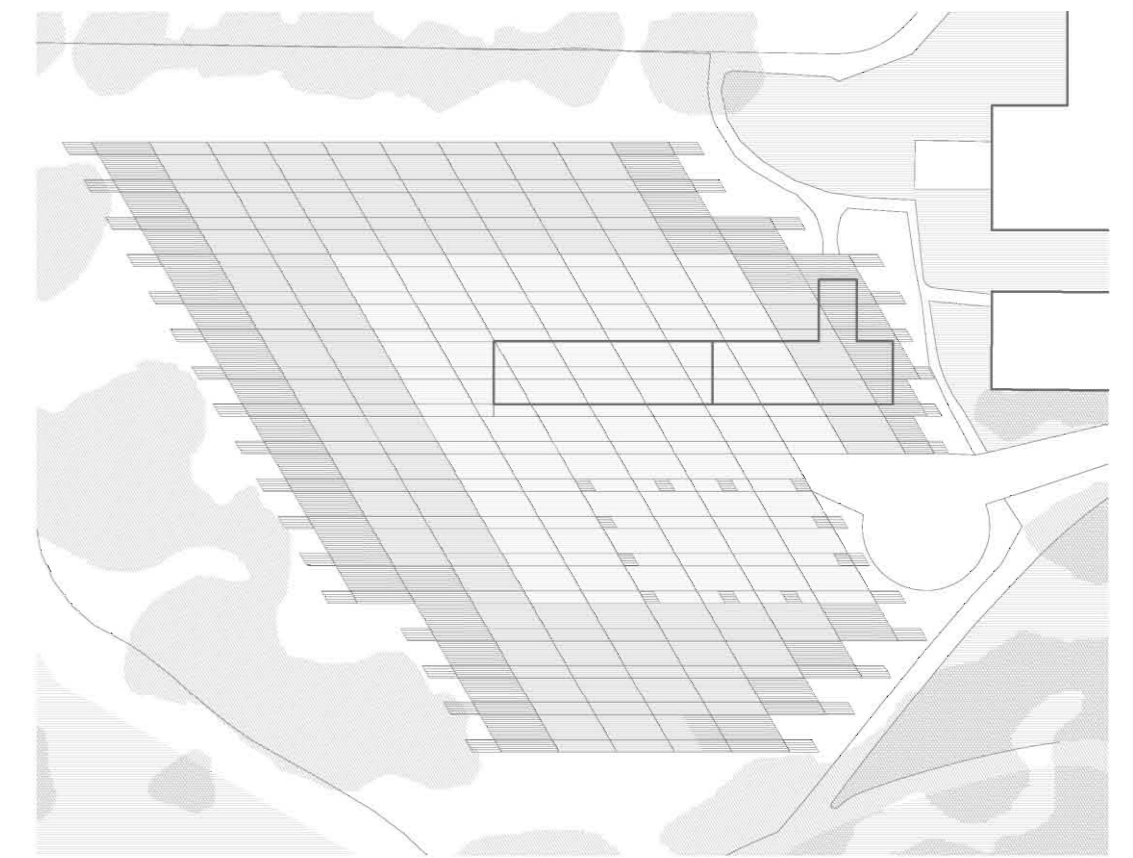
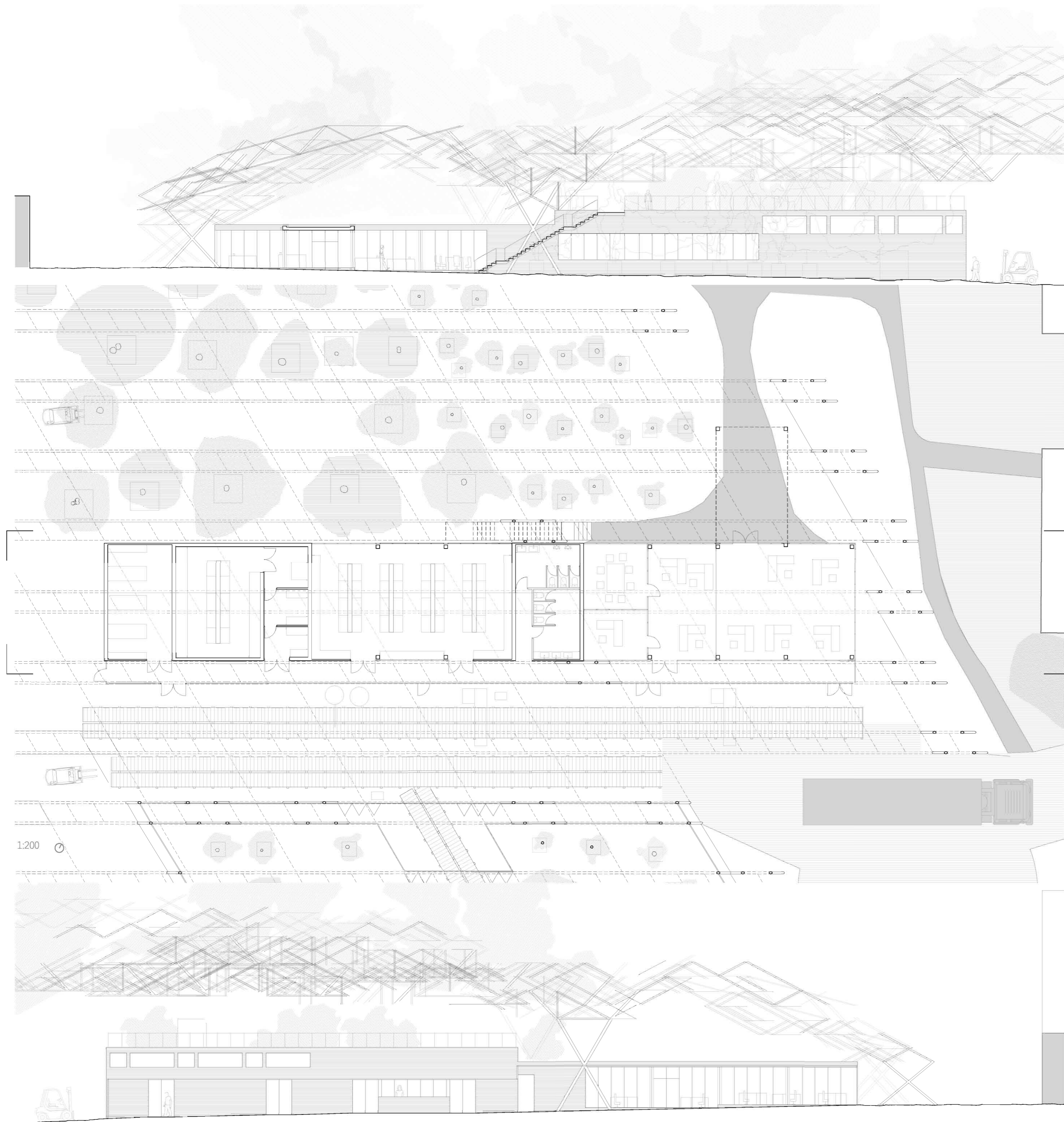
Génesis de la estructura



HOSPITAL
PARA PLANTAS

Nueva York
Panel 2/3
V/10





Altura libre

1:1 000



Usos y superficies

1:1 000

Espacio para plantas



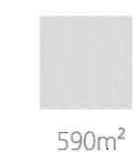
Cuarentena



HOSPITAL PARA PLANTAS

Nueva York
Panel 3/3
V/10

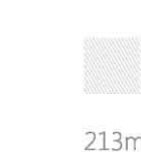
Tratamiento

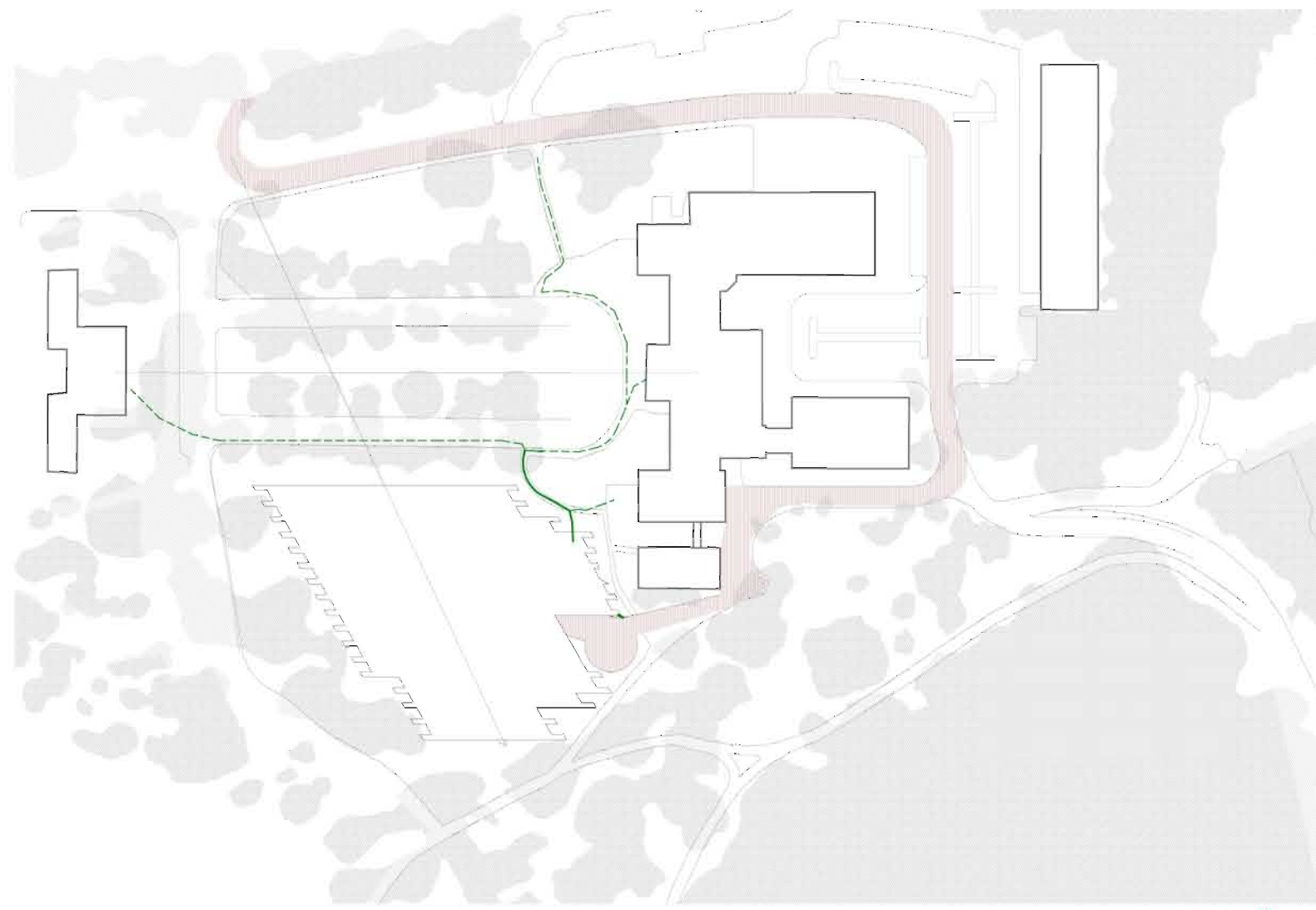


Laboratorios

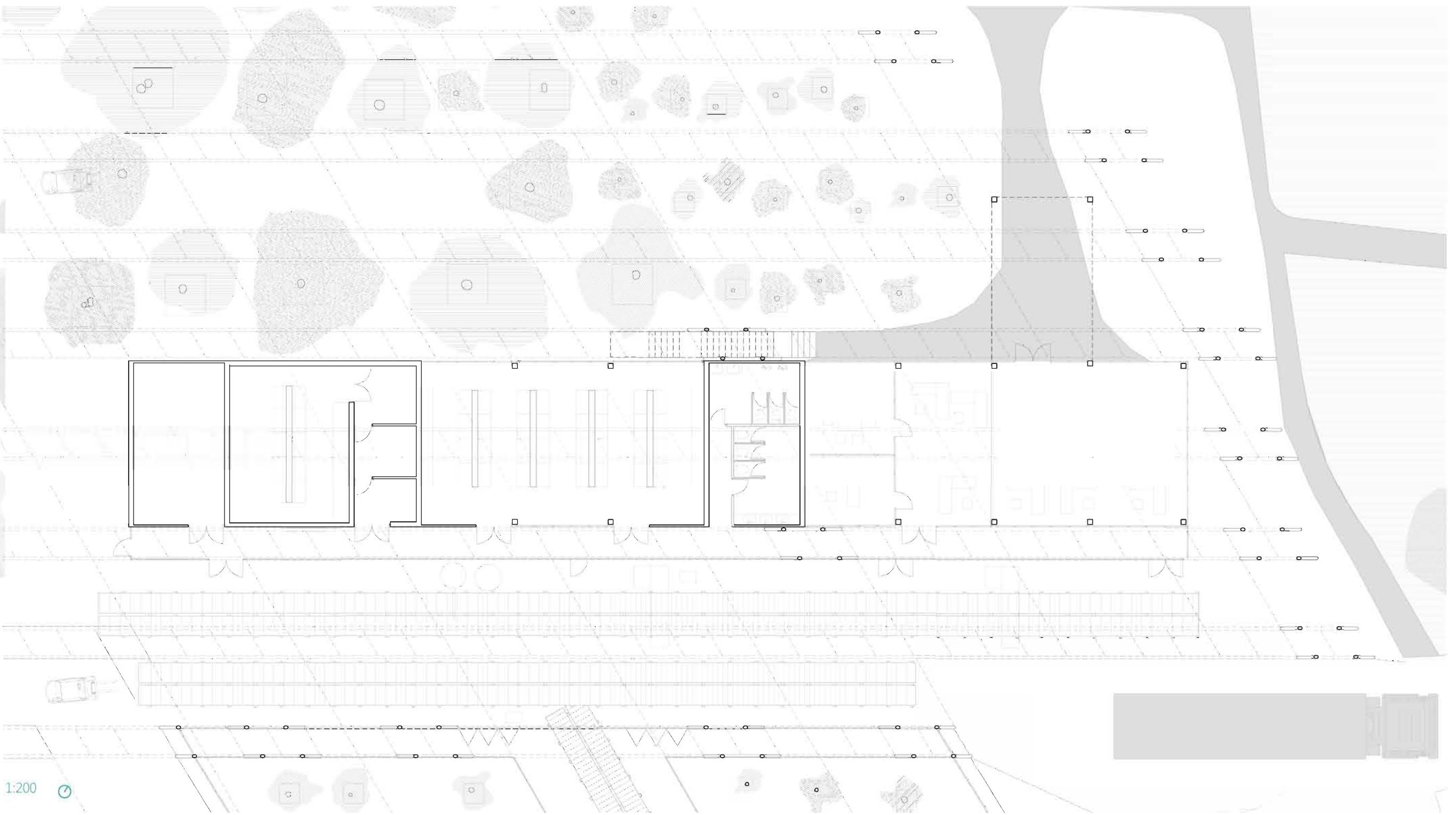


Espacios auxiliares

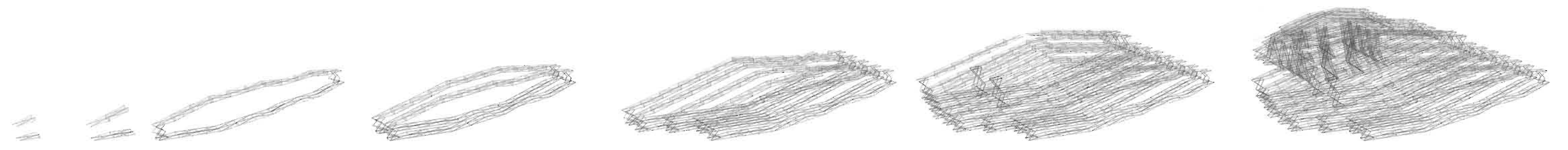
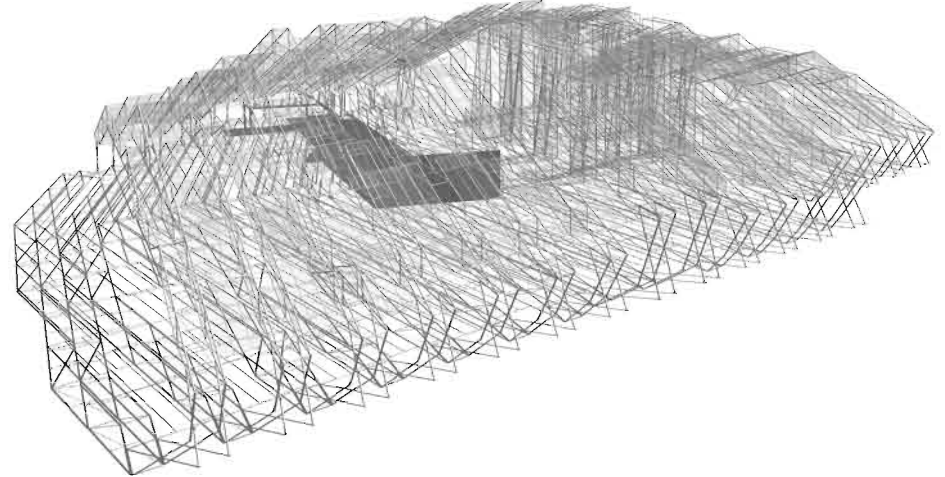




E: 1/2 000

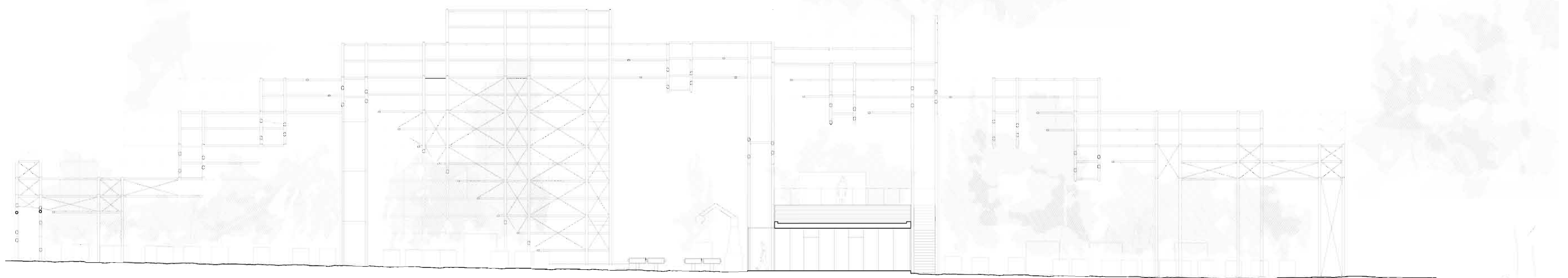


1:200



HOSPITAL PARA PLANTAS

Nueva York
Panel Resumen
V/10



E: 1/200

